

F%27s+Traveling+Masters+Program+&url=http://www.broadwayworld.com/mesa/article/Playwright-
rs-Program-20170210)

/www.broadwayworld.com/mesa/article/Playwright-Steve-Yockey-Headed-to-Mesa-with-DGFs-

lesa with DGFs Traveling Masters

le/Playwright-Steve-Yockey-Headed-to-Mesa-with-DGFs-Traveling-Masters-Program-20170210)



Steve Yockey (Very Still & Hard to See, Blackberry Winter) joins the Dramatists Guild (/people/Dramatists-Guild/) Fund's Traveling Masters Program to work with student writers and offer feedback on their plays at Mesa Community College on February 16 & 17, during the Kennedy Center American College Theatre Festival.

The Traveling Masters program is a national outreach program that brings prominent dramatists into communities across the country to lead master classes, workshops, talkbacks and other public events. Steve Yockey, award-winning playwright of Very Still & Hard to See and Joshua Consumed an Unfortunate Pear, will be the first Traveling Master for the Dramatists Guild (/people/Dramatists-Guild/) Fund in 2017.

Steve joins over 30 other dramatists who have participated in the program nationwide. Traveling Masters have included Jason Robert Brown (/people/Jason-Robert-Brown/), Paula Vogel (/people/Paula-Vogel/), Lynn Ahrens (/people/Lynn-Ahrens/) & Stephen Flaherty (/people/Stephen-Flaherty/), Philip Kan Gotanda (/people/Philip-Kan-Gotanda/), Annie Baker (/people/Annie-Baker/), Daniel Beaty (/people/Daniel-Beaty/), Lisa Kron (/people/Lisa-Kron/), Andrew Lippa (/people/Andrew-Lippa/), among others.

Steve Yockey is a Los Angeles based writer with work produced throughout the US, Europe, and Asia. His plays Bellwether, Pluto, Afterlife, Octopus, Large Animal Games, CARTOON, Subculture, Very Still & Hard to See, The Fisherman's Wife, Wolves, Disassembly, and Niagara Falls & Other Plays are published and available from Samuel French. Additionally, his play Joshua Consumed an Unfortunate Pear was included in the 2015 Humana Festival of New American Plays and the subsequent published anthology. This season, Steve's new play Blackberry Winter opened across the country as a National New Play Network rolling world premiere at Salt Lake Acting Company (/people/Acting-Company/), Actor's Express, Out of Hand, Capital Stage, New Rep, Forum Theatre, Oregon Contemporary Theatre (/people/Contemporary-Theatre/), and Kitchen Dog. Actor's Express and Kitchen Dog also joined San Francisco's Custom Made Theatre this season in producing The Thrush & The Woodpecker. Steve was one of two writers selected for the first US/Australia playwright exchange in 2013, taking his play Pluto to the National Institute of Dramatic Arts in Sydney, NSW and the National Australian Play Festival in Perth, Western Australia. He holds an MFA in Dramatic Writing from NYU's Tisch School of the Arts. Steve contributes issues to the Zenescope comic book series Grimm Tales of Terror and writes for MTV's *Scream* and CW's *Supernatural*. He is currently developing the dark comedy series *Cindy Snow* for Warner Bros/A&E/Lifetime and the digital horror series *Hide* for Warner Bros and Full Screen.

The Dramatists Guild (/people/Dramatists-Guild/) Fund's Traveling Masters program is a national outreach program that sends prominent dramatists into communities across the country for writing workshops, master classes, talkbacks, and other public events. In partnership with leading regional theaters and universities, Traveling Masters creates local programming that gives theater professionals and the public first-hand experience with renowned artists.

Related Articles

Four small article thumbnails with titles like 'New from BWW-Turn Your...', 'Regional Roundup-Top-New...', 'BWW-Review-Love-and...', and 'New from BroadwayWorld-'.

Features-This-Week-Around-Our-Broadway-World-120-New-Women-in-Theater-Column-Robyn-Spangler-in-Los-Angeles-and-More-20170120) Regional: 'Women in Theater', Robyn Spangler in LA, and More! (/mesa/article/Regional-Roundup-Top-New-Features-This-Week-Around-Our-Broadway-World-120-New-Women-in-Theater-Column-Robyn-Spangler-in-Los-Angeles-and-More-20170120)



(/mesa/article/Regional-Roundup-Top-New-Features-This-Week-Around-Our-Broadway-World-23-CABARET-in-Pittsburgh-Transgender-PRISCILLA-QUEEN-OF-THE-DESERT-in-Chicago-and-More-20170203) Regional: CABARET in Pittsburgh, Transgender PRISCILLA and More! (/mesa/article/Regional-Roundup-Top-New-Features-This-Week-Around-Our-Broadway-World-23-CABARET-in-Pittsburgh-Transgender-PRISCILLA-QUEEN-OF-THE-DESERT-in-Chicago-and-More-20170203)



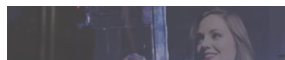
(/mesa/article/New-from-BroadwayWorld-Your-Own-Auto-Updating-Official-Web-Site-20170208) New from BWW, Your Own Auto-Updating Official Web Site (/mesa/article/New-from-BroadwayWorld-Your-Own-Auto-Updating-Official-Web-Site-20170208)



(/mesa/article/Regional-Roundup-Top-New-Features-This-Week-Around-Our-Broadway-World-127-ALWAYS-PATSY-CLINE-in-Raleigh-THE-LAST-FIVE-YEARS-in-Los-Angeles-and-More-20170127) Regional: ALWAYS... PATSY in Raleigh, LAST FIVE YEARS in LA and More! (/mesa/article/Regional-Roundup-Top-New-Features-This-Week-Around-Our-Broadway-World-127-ALWAYS-PATSY-CLINE-in-Raleigh-THE-LAST-FIVE-YEARS-in-Los-Angeles-and-More-20170127)



(/mesa/article/Regional-Roundup-Top-New-



MESA SHOWS (/mesa/regionalshows.cfm? ModPagespeed=off)

(/mesa/regionalshows.cfm? ModPagespeed=off) Ruthie

Comedy (/mesa/regionalshows.cfm? ModPagespeed=off) Scottsdale Desert Stages Theatre (Runs 3/3 - 4/9)

(/mesa/regionalshows.cfm? ModPagespeed=off) Jesus

Superstar (/mesa/regionalshow ModPagespeed=off) Arizona Broadway Theatre (Runs 3/17 - 4/16)

(/mesa/regionalshows.cfm? ModPagespeed=off) Oliver (/mesa/regionalshows.cfm? ModPagespeed=off)

Arizona Broadway Theatre (Runs 4/28 - 5/21)

(/mesa/regionalshows.cfm? ModPagespeed=off) School Musical (/mesa/regionalshows.cfm? ModPagespeed=off)

Scottsdale Desert Stages Theatre (Runs 5/29 - 6/18)

(/mesa/regionalshows.cfm? ModPagespeed=off) Saturn Fever (/mesa/regionalshows.cfm? ModPagespeed=off)

Arizona Broadway Theatre (Runs 7/21 - 8/13)

VIEW ALL (/mesa/regionalshc ModPagespeed=off) ADD A (/mesa/addyourshow.cfm?ModPa: AUDITIONS (/equity.cfi

Ticket Central

Advertisement for Broadway musicals 'NEWSIES' and 'BULL IN CHINA'S' with ticket information.

- WAR PAINT (/special-broadway-offers.cfm)
IF I FOE
ATLAN
THE PRICE (/special-broadway-offers.cfm)
(/special-bi offers.cfm)

Watch Now on BWW TV

More (/